

MYCOTOXIN DECISIONS

**YOU SUSPECT MYCOTOXINS COULD BE PLAGUING THE
FEED YOU'RE RESPONSIBLE FOR.**

WHAT DO YOU DO NEXT?

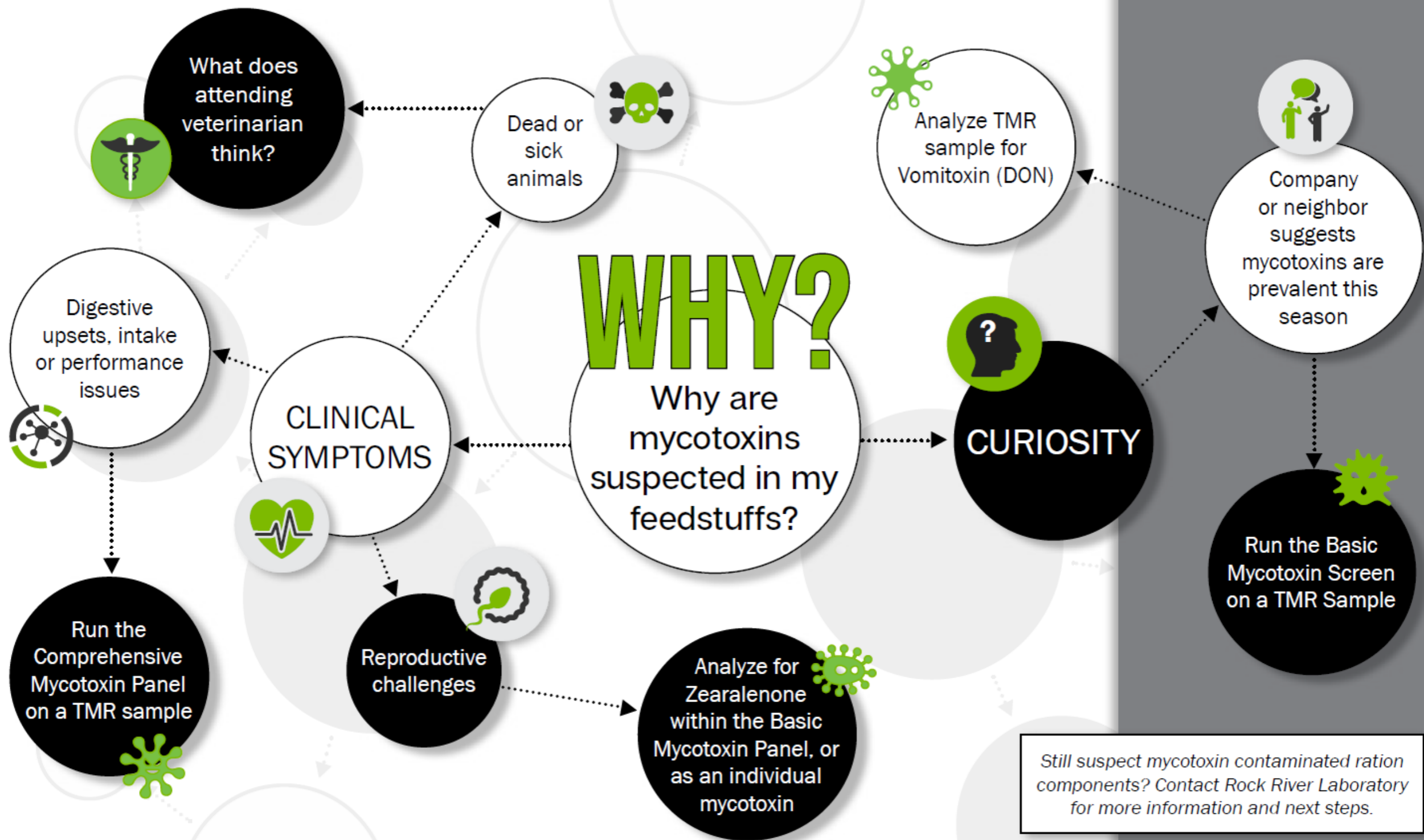
Feeds are fickle. Without any notice, you could be dealing with mycotoxins infiltrating the available ration components. If you suspect mycotoxins contamination of feed resources, what steps should you take to confirm? The expert team at Rock River Laboratory recommends:

1. Following a simple decision tree to make an assessment of the mycotoxin load
2. Ascertain the root of the challenges
3. Put mitigation steps in place

Turn the page to get started!



**ROCK RIVER
LABORATORY, INC.**
AGRICULTURAL ANALYSIS



WHY?

Why are mycotoxins suspected in my feedstuffs?

CLINICAL SYMPTOMS

CURIOSITY

What does attending veterinarian think?

Dead or sick animals

Digestive upsets, intake or performance issues

Company or neighbor suggests mycotoxins are prevalent this season

Reproductive challenges

Analyze TMR sample for Vomitoxin (DON)

Run the Comprehensive Mycotoxin Panel on a TMR sample

Analyze for Zearalenone within the Basic Mycotoxin Panel, or as an individual mycotoxin

Run the Basic Mycotoxin Screen on a TMR Sample

Still suspect mycotoxin contaminated ration components? Contact Rock River Laboratory for more information and next steps.

KEEP IN MIND:

Testing for DON is really the bare minimum.

- Reports as 'concern level' or 'no concern level'
- If there is a concern level, then take action with a binder or nutritional solution devised with nutritionist

Alternative to only analyzing for DON is to analyze individual feeds or individual components of the ration to identify the source of the majority of the mycotoxin load.

Contaminated feed should be diluted.

Utilizing the Rock River Laboratory Basic or Comprehensive Mycotoxin Panels is more expensive than analyzing for DON only, but offer much more information to make decisions in the management moving forward.

The Rock River Laboratory Mycotoxin Panels identify negative synergistic effects.

While multiple mycotoxins may report as 'under concern levels', they can accumulate and compound to register over concern levels of mycotoxin load.

www.rockriverlab.com | 920-261-0446 | office@rockriverlab.com



Rock River Laboratory, Inc.



@Field_Updates



RockRiverLab1